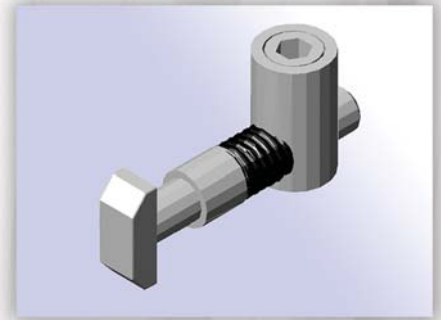


New Product Bulletin

T-Anchor Fastener

Easily connect Faztek's smooth extrusions with one simple fastener. The T-Anchor fastener keeps the slots of the extrusion clear, allowing panels to insert without notching the corners. Fits smooth extrusions beginning with "15SM".

- ▶ Very strong connection
- ▶ Infinite positioning
- ▶ Clean, hidden appearance
- ▶ No panel machining required



The T-Anchor requires one counter bore. See the illustration below for installation.

1. Drop barrel into counterbore (Item 2)
2. Insert "T" Bar (item 3) w/ spring into extrusion hole (item 4) and hole in barrel (item 2)
3. Insert set screw (item 1) and begin tightening until slight tension is on the "T" Bar (item 3)
4. Place the head of the "T" anchor into the mating extrusion (item 5)
5. Once extrusion is in place, tighten the set screw (item 1) down.

