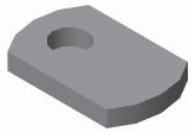




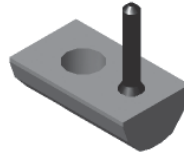
T-Nut Overview

No matter what the size or scope of your project, T-Nuts will most likely be used for at least one function to complete the assembly. The following overview explains the features and benefits of each type of T-Nut.



Economy

- Cost-effective
- High Strength
- Inserted from end of extrusion



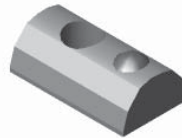
Drop-In

- High Strength
- Easy to add anywhere along the slot
- Flexible handle to assist assembly and to act as a friction point
- Extra thread engagement



Double Economy

- Cost-effective
- High Strength
- Fast assembly for brackets



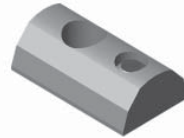
Drop-In w/ Alignment Ball

- High Strength
- Easy to add anywhere along the slot
- Spring-loaded ball creates snug fit and allows easy positioning



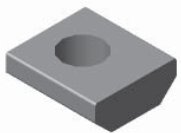
Triple Economy

- Cost-effective
- High Strength
- Fast assembly for brackets



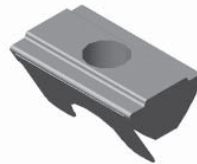
Drop-In w/ Set Screw

- High Strength
- Easy to add anywhere along the slot
- Tighten set screw for accurate positioning



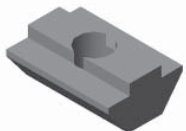
Standard

- Cost-effective
- High Strength
- Extra thread engagement



Drop-In w/ Spring Leaf

- High Strength
- Easy to add anywhere along the slot
- Spring leaf holds t-nut in place



Hi-Torque

- Cost-effective
- High Strength
- Maximum thread engagement



Drop-In
(Rubber Nub)

Drop-In
(Alignment Ball)

Drop-In
(Set Screw)

Drop-In
(Spring Leaf)

Standard

Economy

Hi-Torque