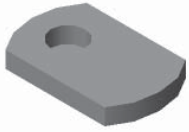




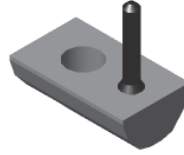
T-Nut Overview

No matter what the size or scope of your project, T-Nuts will most likely be used for at least one function to complete the assembly. The following overview explains the features and benefits of each type of T-Nut.



Economy

- Cost-effective
- High Strength
- Inserted from end of extrusion



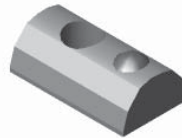
Drop-In

- High Strength
- Easy to add anywhere along the slot
- Flexible handle to assist assembly and to act as a friction point
- Extra thread engagement



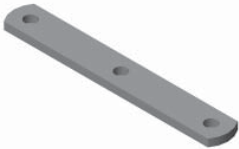
Double Economy

- Cost-effective
- High Strength
- Fast assembly for brackets
- Can be rolled into slot



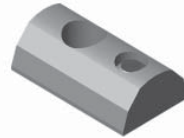
Drop-In w/ Alignment Ball

- High Strength
- Easy to add anywhere along the slot
- Spring-loaded ball creates snug fit and allows easy positioning



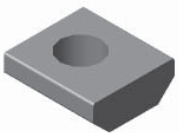
Triple Economy

- Cost-effective
- High Strength
- Fast assembly for brackets
- Can be rolled into slot



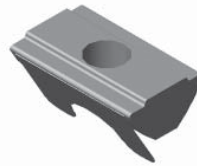
Drop-In w/ Set Screw

- High Strength
- Easy to add anywhere along the slot
- Tighten set screw for accurate positioning



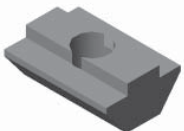
Standard

- Cost-effective
- High Strength
- Extra thread engagement



Drop-In w/ Spring Leaf

- High Strength
- Easy to add anywhere along the slot
- Spring leaf holds t-nut in place



Hi-Torque

- Cost-effective
- High Strength
- Maximum thread engagement



Drop-In
(Rubber Nub)

Drop-In
(Alignment Ball)

Drop-In
(Set Screw)

Drop-In
(Spring Leaf)

Standard

Economy

Hi-Torque



15/40 Series T-Nuts

Economy T-Nuts

	Part No.	Description	Thread	Material	Tap Location	Width
	15FA3501	Economy T-Nut	5/16-18	Steel	Offset	.625
	15FA3538	Economy T-Nut	5/16-18	Steel	Centered	.625
	15FA3600	Economy T-Nut	5/16-18	Stainless	Offset	.625
	15FA3502	Double Economy T-Nut	5/16-18	Steel	Centered	.500
	15FA3520	Triple Economy T-Nut	5/16-18	Steel	Centered	.500
	15FA3506	Economy T-Nut	1/4-20	Steel	Offset	.500
	15MFA3920	Economy T-Nut	M8 x 1.25	Steel	Offset	.625
	15MFA3900	Economy T-Nut	M6 x 1.00	Steel	Offset	.625

Standard T-Nuts

	Part No.	Description	Thread	Material	Tap Location	Width
	15FA3503	Standard T-Nut	5/16-18	Steel	Offset	.625
	15FA3403	Standard T-Nut	1/4-20	Steel	Offset	.625
	15FA3513	Standard T-Nut	10-32	Steel	Offset	.625
	15FA3510	Standard T-Nut	8-32	Steel	Offset	.625
	15MFA3921	Standard T-Nut	M8 x 1.25	Steel	Offset	.625
	15MFA3925	Standard T-Nut	M5 x .8	Steel	Offset	.625

Drop-In T-Nuts

	Part No.	Description	Thread	Material	Tap Location	Width
	15FA3504	Drop-In T-Nut	5/16-18	Steel	Offset	.500
	15FA3505	Drop-In T-Nut w/ Set Screw	5/16-18	Steel	Offset	.500
	15FA3511	Drop-In T-Nut w/ Alignment Ball	5/16-18	Steel	Offset	.500
	15FA3544	Drop-In T-Nut w/ Alignment Ball (NP)	5/16-18	Steel	Offset	.500
	15FA3602	Drop-In T-Nut w/ Alignment Ball (SS)	5/16-18	Steel	Offset	.500
	15FA3522	Drop-In T-Nut w/ Spring Leaf	5/16-18	Steel	Offset	.500
	15FA3507	Drop-In T-Nut	1/4-20	Steel	Offset	.500
	15FA3405	Drop-In T-Nut w/ Set Screw	1/4-20	Steel	Offset	.500
	15FA3536	Drop-In T-Nut w/ Alignment Ball	1/4-20	Steel	Offset	.500
	15FA3540	Drop-In T-Nut w/ Alignment Ball (NP)	1/4-20	Steel	Offset	.500
	15FA3603	Drop-In T-Nut w/ Alignment Ball (SS)	1/4-20	Steel	Offset	.500
	15FA3509	Drop-In T-Nut	10-32	Steel	Offset	.500
	15FA3407	Drop-In T-Nut w/ Set Screw	10-32	Steel	Offset	.500
	15FA3534	Drop-In T-Nut w/ Alignment Ball	10-32	Steel	Offset	.500
	15FA3542	Drop-In T-Nut w/ Alignment Ball (NP)	10-32	Steel	Offset	.500
	15MFA3922	Drop-In T-Nut	M8 x 1.25	Steel	Offset	.500
	15MFA3923	Drop-In T-Nut w/ Alignment Ball	M8 x 1.25	Steel	Offset	.500
	15MFA3802	Drop-In T-Nut w/ Alignment Ball (SS)	M8 x 1.25	Steel	Offset	.500
	15MFA3902	Drop-In T-Nut	M6 x 1.0	Steel	Offset	.500
	15MFA3928	Drop-In T-Nut w/ Alignment Ball	M6 x 1.0	Steel	Offset	.500
	15MFA3803	Drop-In T-Nut w/ Alignment Ball (SS)	M6 x 1.0	Steel	Offset	.500
	15MFA3938	Drop-In T-Nut w/ Alignment Ball	M5 x .8	Steel	Offset	.500
15MFA3804	Drop-In T-Nut w/ Alignment Ball (SS)	M5 x .8	Steel	Offset	.500	


Hi-Torque T-Nuts

	Part No.	Description	Thread	Material	Tap Location	Width
	15FA3532	Hi-Torque T-Nut	5/16-18	Steel	Centered	.705
	15MFA3926	Hi-Torque T-Nut	M8 x 1.25	Steel	Centered	.705




Fasteners: 5/16-18 Thread


Button Head Socket Cap Screws (BHSCS)

	Part No.	Description	Material	Tool
	13FA3321	5/16-18 x 1/2 BHSCS	Steel	3/16 Hex
	13FA3600	5/16-18 x 1/2 BHSCS	Stainless	3/16 Hex
	13FA3322	5/16-18 x 5/8 BHSCS	Steel	3/16 Hex
	13FA3602	5/16-18 x 5/8 BHSCS	Stainless	3/16 Hex
	13FA3323	5/16-18 x 1 BHSCS	Steel	3/16 Hex
	13FA3324	5/16-18 x 1-1/4 BHSCS	Steel	3/16 Hex
	13FA3604	5/16-18 x 1-1/4 BHSCS	Stainless	3/16 Hex


Flanged Button Head Socket Cap Screws (FBHSCS)

	Part No.	Description	Material	Tool
	13FA3330	5/16-18 x 1/2 FBHSCS	Steel	3/16 Hex
	13FA3331	5/16-18 x 5/8 FBHSCS	Steel	3/16 Hex


Socket Head Cap Screws (SHCS)

	Part No.	Description	Material	Tool
	13FA3337	5/16-18 x 1/2 SHCS	Steel	1/4 Hex
	13FA3325	5/16-18 x 5/8 SHCS	Steel	1/4 Hex
	13FA3326	5/16-18 x 3/4 SHCS	Steel	1/4 Hex
	13FA3327	5/16-18 x 7/8 SHCS	Steel	1/4 Hex
	13FA3335	5/16-18 x 1 SHCS	Steel	1/4 Hex
	13FA3328	5/16-18 x 1-1/4 SHCS	Steel	1/4 Hex
	13FA3603	5/16-18 x 1-1/4 SHCS	Stainless	1/4 Hex
13FA3329	5/16-18 x 1-1/2 SHCS	Steel	1/4 Hex	


Low Head Socket Cap Screws (LHSCS)

	Part No.	Description	Material	Tool
	13FA3354	5/16-18 x 5/8 LHSCS	Steel	3/16 Hex
	13FA3710	5/16-18 x 1-1/4 LHSCS	Steel	3/16 Hex

Flat Head Socket Cap Screws (FHSCS)

	Part No.	Description	Material	Tool
	13FA3353	5/16-18 x 5/8 FHSCS	Steel	3/16 Hex
	13FA3342	5/16-18 x 3/4 FHSCS	Steel	3/16 Hex


Carriage Bolts

	Part No.	Description	Material	Tool
	13FA3708	5/16-18 x 5/8 Carriage Bolt	Steel	N/A
	13FA3612	5/16-18 x 3/4 Carriage Bolt	Steel	N/A




Fasteners: 1/4-20 Thread


Button Head Socket Cap Screws (BHSCS)

	Part No.	Description	Material	Tool
	13FA3300	1/4-20 x 1/2 BHSCS	Steel	5/32 Hex
	13FA3605	1/4-20 x 1/2 BHSCS	Stainless	5/32 Hex
	13FA3301	1/4-20 x 5/8 BHSCS	Steel	5/32 Hex
	13FA3302	1/4-20 x 3/4 BHSCS	Steel	5/32 Hex
	13FA3606	1/4-20 x 3/4 BHSCS	Stainless	5/32 Hex
	13FA3336	1/4-20 x 1 BHSCS	Steel	5/32 Hex


Flanged Button Head Socket Cap Screws (FBHSCS)

	Part No.	Description	Material	Tool
	13FA3308	1/4-20 x 3/8 FBHSCS	Steel	3/16 Hex
	13FA3309	1/4-20 x 1/2 FBHSCS	Steel	3/16 Hex
	13FA3310	1/4-20 x 3/4 FBHSCS	Steel	3/16 Hex


Socket Head Cap Screws (SHCS)

	Part No.	Description	Material	Tool
	13FA3303	1/4-20 x 1/2 SHCS	Steel	3/16 Hex
	13FA3304	1/4-20 x 5/8 SHCS	Steel	3/16 Hex
	13FA3305	1/4-20 x 3/4 SHCS	Steel	3/16 Hex
	13FA3311	1/4-20 x 7/8 SHCS	Steel	3/16 Hex
	13FA3306	1/4-20 x 1 SHCS	Steel	3/16 Hex


Low Head Socket Cap Screws (LHSCS)

	Part No.	Description	Material	Tool
	13FA3360	1/4-20 x 1/2 LHSCS	Steel	5/32 Hex
	13FA3362	1/4-20 x 1 LHSCS	Steel	5/32 Hex

Flat Head Socket Cap Screws (FHSCS)

	Part No.	Description	Material	Tool
	13FA3110	1/4-20 x 1/2 FHSCS	Steel	5/32 Hex
	13FA3111	1/4-20 x 5/8 FHSCS	Steel	5/32 Hex
	13FA3126	1/4-20 x 7/8 FHSCS	Steel	5/32 Hex
	13FA3127	1/4-20 x 1 FHSCS	Steel	5/32 Hex


Carriage Bolts

	Part No.	Description	Material	Tool
	13FA3709	1/4-20 x 3/4 Carriage Bolt	Steel	N/A




Fasteners: 3/8-16 Thread

Socket Head Cap Screws (SHCS)

	Part No.	Description	Material	Tool
	13FA3340	3/8-16 x 3/4 SHCS	Steel	5/16 Hex


Fasteners: 1/2-13 Thread

Button Head Socket Cap Screws (BHSCS)


	Part No.	Description	Material	Tool
	13FA3338	1/2-13 x 3/4 BHSCS	Steel	5/16 Hex

Fasteners: 10-32 Thread


Socket Head Cap Screws (SHCS)

	Part No.	Description	Material	Tool
	13FA3350	10-32 x 1/2 SHCS	Steel	5/32 Hex
	13FA3351	10-32 x 5/8 SHCS	Steel	5/32 Hex
	13FA3352	10-32 x 3/4 SHCS	Steel	5/32 Hex
	13FA3607	10-32 x 3/4 SHCS	Stainless	5/32 Hex

Button Head Socket Cap Screws (BHSCS)

	Part No.	Description	Material	Tool
	13FA3316	10-32 x 3/8 BHSCS	Steel	5/32 Hex
	13FA3128	10-32 x 1/2 BHSCS	Steel	5/32 Hex
	13FA3129	10-32 x 5/8 BHSCS	Steel	5/32 Hex


Flat Head Socket Cap Screws (FHSCS)

	Part No.	Description	Material	Tool
	13FA3117	10-32 x 1/2 FHSCS	Steel	5/32 Hex




Washers & Hex Nuts

Washers


	Part No.	Description	Material	Tool
	13FA3700	5/16" x .062"	Steel	N/A
	13FA3609	5/16" x .062"	Stainless	N/A
	13FA3704	5/16" x .125"	Steel	N/A
	13FA3701	1/4" x .062"	Steel	N/A
	13FA3608	1/4" x .062"	Stainless	N/A
	13FA3712	1/4" x .125"	Steel	N/A

Hex Nuts

	Part No.	Description	Material	Tool
	13FA3112	5/16-18 Hex Nut	Steel	N/A
	13FA3611	5/16-18 Hex Nut	Stainless	N/A
	13FA3113	1/4-20 Hex Nut	Steel	N/A
	13FA3610	1/4-20 Hex Nut	Stainless	N/A

Shoulder Bolts


Shoulder Bolts

	Part No.	Description	Material	Tool
	13FA3705	3/8-16 x 3/4 Shoulder Bolt	Steel	N/A
	13FA3715	3/8-16 x 3/8 Shoulder Bolt	Steel	N/A
	13FA3707	5/16-18 x 1/2 Shoulder Bolt	Steel	N/A
	13FA3716	5/16-18 x 1/4 Shoulder Bolt	Steel	N/A




Metric Fasteners: M8 x 1.25


Button Head Socket Cap Screws (BHSCS)

	Part No.	Description	Material	Tool
	13MFA3649	M8 x 12 BHSCS	Steel	M6 Hex
	13MFA3650	M8 x 14 BHSCS	Steel	M5 Hex
	13MFA3651	M8 x 16 BHSCS	Steel	M5 Hex
	13MFA3609	M8 x 20 BHSCS	Steel	M5 Hex
	13MFA3652	M8 x 25 BHSCS	Steel	M5 Hex
	13MFA3610	M8 x 30 BHSCS	Steel	M5 Hex
	13MFA3653	M8 x 40 BHSCS	Steel	M5 Hex
	13MFA3654	M8 x 50 BHSCS	Steel	M5 Hex

Socket Head Cap Screws (SHCS)


	Part No.	Description	Material	Tool
	13MFA3607	M8 x 12 SHCS	Steel	M5 Hex
	13MFA3655	M8 x 14 SHCS	Steel	M5 Hex
	13MFA3613	M8 x 16 SHCS	Steel	M5 Hex
	13MFA3615	M8 x 20 SHCS	Steel	M5 Hex
	13MFA3608	M8 x 25 SHCS	Steel	M5 Hex
	13MFA3656	M8 x 40 SHCS	Steel	M5 Hex
	13MFA3657	M8 x 50 SHCS	Steel	M5 Hex

Carriage Bolts


	Part No.	Description	Material	Tool
	13MFA3614	M8 x 25 Carriage Bolt	Steel	N/A

Metric Washers & Hex Nuts

Washers

	Part No.	Description	Material	Tool
	13MFA3622	M8 x 1.58	Steel	N/A
	13MFA3620	M6 x 1.58	Steel	N/A


Hex Nuts

	Part No.	Description	Material	Tool
	13MFA3617	M8 x 1.25	Steel	N/A
	13MFA3616	M6 x 1.0	Steel	N/A




Metric Fasteners: M6 x 1.0


Button Head Socket Cap Screws (BHSCS)

	Part No.	Description	Material	Tool
	13MFA3621	M6 x 10 BHSCS	Steel	M5 Hex
	13MFA3605	M6 x 12 BHSCS	Steel	M5 Hex
	13MFA3624	M6 x 14 BHSCS	Steel	M5 Hex
	13MFA3647	M6 x 16 BHSCS	Steel	M5 Hex
	13MFA3612	M6 x 20 BHSCS	Steel	M5 Hex
	13MFA3648	M6 x 25 BHSCS	Steel	M5 Hex

Socket Head Cap Screws (SHCS)


	Part No.	Description	Material	Tool
	13MFA3600	M6 x 12 SHCS	Steel	M5 Hex
	13MFA3602	M6 x 16 SHCS	Steel	M5 Hex
	13MFA3618	M6 x 20 SHCS	Steel	M5 Hex
	13MFA3606	M6 x 22 SHCS	Steel	M5 Hex
	13MFA3646	M6 x 25 SHCS	Steel	M5 Hex

Carriage Bolts


	Part No.	Description	Material	Tool
	13MFA3611	M6 x 2 Carriage Bolt	Steel	N/A

Metric Fasteners: M5 x .8

Button Head Socket Cap Screws (BHSCS)

	Part No.	Description	Material	Tool
	13MFA3643	M5 x 8 BHSCS	Steel	M5 Hex
	13MFA3644	M5 x 12 BHSCS	Steel	M5 Hex
	13MFA3645	M5 x 16 BHSCS	Steel	M5 Hex

Socket Head Cap Screws (SHCS)

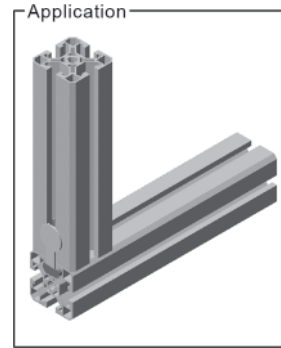
	Part No.	Description	Material	Tool
	13MFA3640	M5 x 8 SHCS	Steel	M5 Hex
	13MFA3641	M5 x 12 SHCS	Steel	M5 Hex
	13MFA3642	M5 x 16 SHCS	Steel	M5 Hex
	13MFA3619	M5 x 20 SHCS	Steel	M5 Hex





Anchor Fasteners

40 Series Anchor Fastener Assembly w/ Standard T-Nut	
Part No. 15MFAC3720 (M8 x 1.25 T-Nut)	
Very strong connection method	
Fast, easy assembly	
Corrosion resistant finish	
Zinc die casting material	
Infinite positioning along the T-slot	



Machining Required

Service No.	Description
15MA9071	15/40 Series counterbore drilling service

See page 250 for machining information

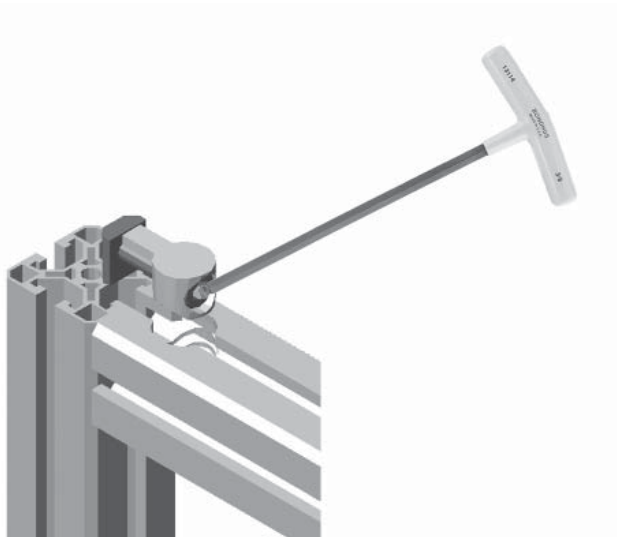
Already have the hardware? Order the anchor body separately:

Part No. **15FA3610**



Assembly Instructions

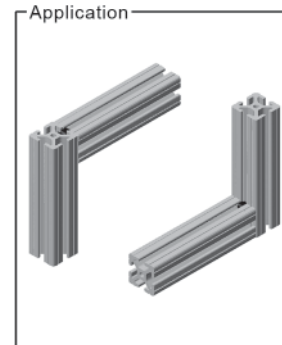
1. Insert the assembled anchor fastener into the T-slot.
2. Set the mating extrusion 90° to the joining slot.
3. Place the anchor fastener into the counterbore of the mating extrusion.
4. Be sure the extrusions are properly aligned.
5. Tighten the anchor fastener with a ball end hex wrench.





End Fasteners

40 Series End Fastener Assembly	
Part No. 15MFAC3710 (M8 x 25 screw)	
Strong 90° connection	
Ideal for tight spacing	
Creates a clean, hidden appearance	



Machining Required

Service No.	Description
(multiple)	End tap services - see pg. 247
(multiple)	Access hole services - see pg. 249

Assembly Instructions

1. Set the clip on the extrusion end over the tapped hole.
2. Thread the bolt into the hole, but do not fully tighten at this time.
3. Slide the bottom T-slot onto the clip of the mating extrusion.
4. Line up the access hole with the head of the bolt.
5. Tighten the end fastener with a ball end hex wrench.

Already have the hardware? Order the end clip separately:

Part No. **15FA3615**

