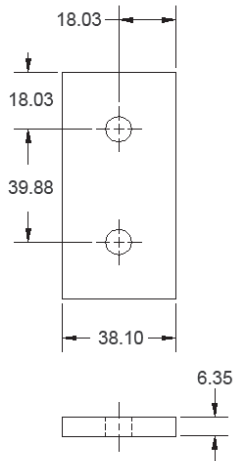


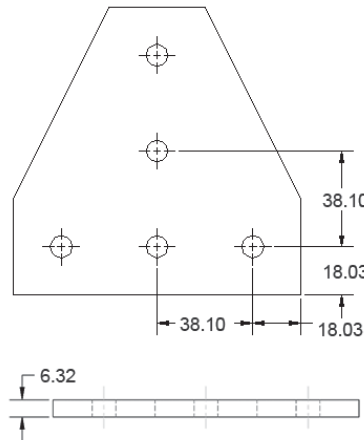


Please review the following bolt pattern dimensions which apply to all 40 Series Corner Brackets and Joining Plates.

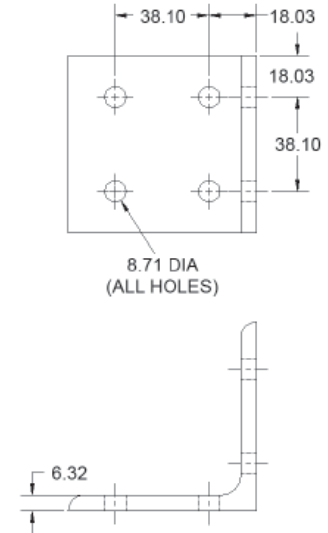
Joining Strips



Joining Plates



Corner Brackets



JOINING PLATE & CORNER BRACKET PROPERTIES	
MATERIAL	6061-T6
FINISH	CLEAR ANODIZE
HOLE DIAMETER	8.71mm



Pre-load fasteners into brackets before assembly to save time. See page 6 for details.

Joining Strips & Plates - used to connect two or more extrusions at various angles. Joining strips are fastened to the exterior of extrusions with a combination of T-nuts and flanged button heads.

Corner Brackets - used to connect two extrusions at 90° angles. Most corner brackets are fastened on the inside of extrusions with a combination of T-nuts and button heads.

Please see the '**recommended hardware**' boxes on the following pages to be sure you have the correct fasteners and quantities for each part.

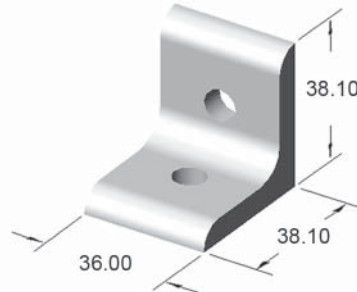




Corner Brackets

40CB4801

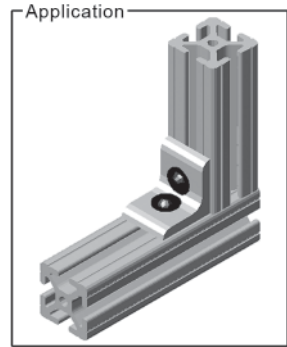
2 HOLE INSIDE CORNER BRACKET



RECOMMENDED HARDWARE

QTY	DESCRIPTION	PART NO.
2	M8 x 16mm BHSCS	13MFA3613
2	M8 x 1.25 ECONOMY T-NUT	15MFA3920

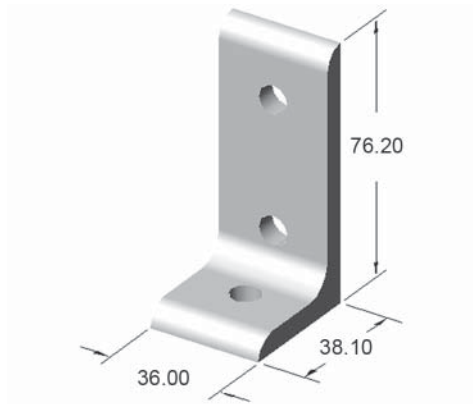
See pages 258-265 for additional fasteners & T-nuts



Part weight: .080 lbs

40CB4802

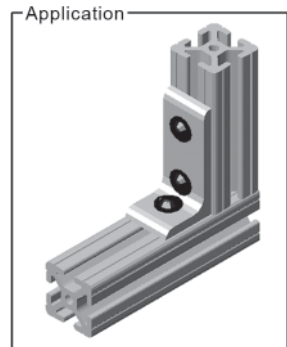
3 HOLE INSIDE CORNER BRACKET



RECOMMENDED HARDWARE

QTY	DESCRIPTION	PART NO.
3	M8 x 16mm BHSCS	13MFA3613
3	M8 x 1.25 ECONOMY T-NUT	15MFA3920

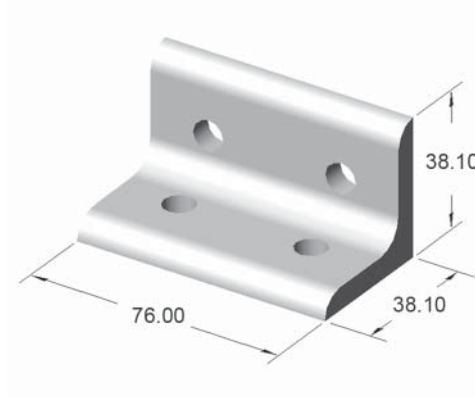
See pages 258-265 for additional fasteners & T-nuts



Part weight: .130 lbs

40CB4803

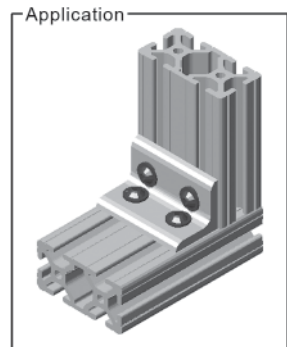
4 HOLE INSIDE CORNER BRACKET



RECOMMENDED HARDWARE

QTY	DESCRIPTION	PART NO.
4	M8 x 16mm BHSCS	13MFA3613
4	M8 x 1.25 ECONOMY T-NUT	15MFA3920

See pages 258-265 for additional fasteners & T-nuts



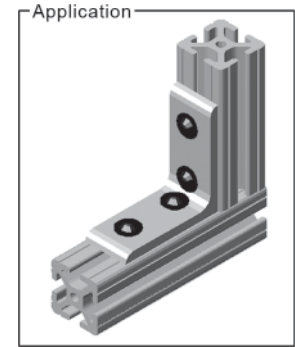
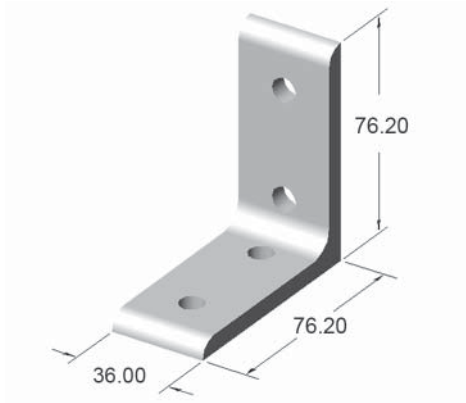
Part weight: .175 lbs



Corner Brackets

40CB4804

4 HOLE INSIDE CORNER BRACKET



Part weight: .170 lbs

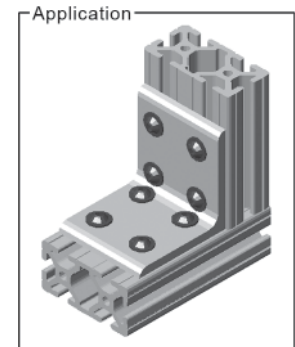
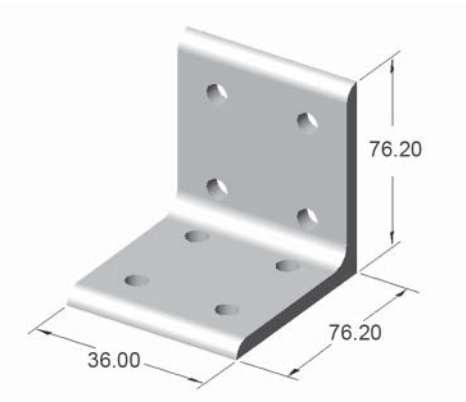
RECOMMENDED HARDWARE

QTY	DESCRIPTION	PART NO.
4	M8 x 16mm BHSCS	13MFA3613
4	M8 x 1.25 ECONOMY T-NUT	15MFA3920

See pages 258-265 for additional fasteners & T-nuts

40CB4805

8 HOLE INSIDE CORNER BRACKET



Part weight: .365 lbs

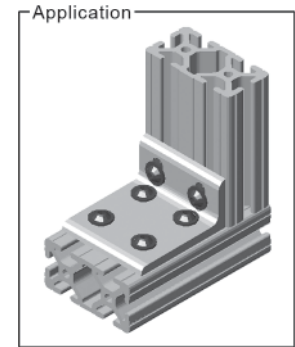
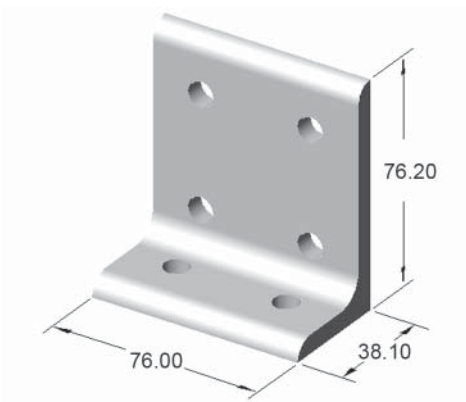
RECOMMENDED HARDWARE

QTY	DESCRIPTION	PART NO.
8	M8 x 16mm BHSCS	13MFA3613
8	M8 x 1.25 ECONOMY T-NUT	15MFA3920

See pages 258-265 for additional fasteners & T-nuts

40CB4806

6 HOLE INSIDE CORNER BRACKET



Part weight: .285 lbs

RECOMMENDED HARDWARE

QTY	DESCRIPTION	PART NO.
6	M8 x 16mm BHSCS	13MFA3613
6	M8 x 1.25 ECONOMY T-NUT	15MFA3920

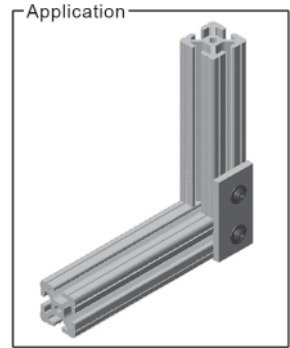
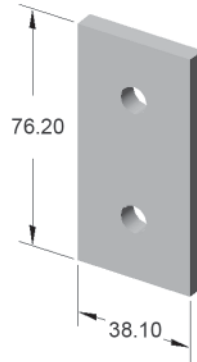
See pages 258-265 for additional fasteners & T-nuts



Joining Plates

40JP4501

2 HOLE JOINING STRIP



Part weight: .105 lbs

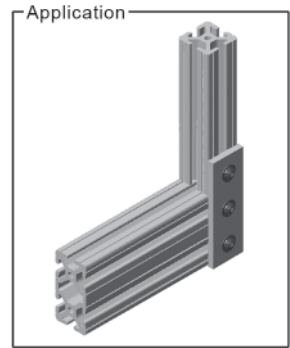
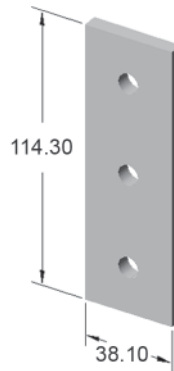
RECOMMENDED HARDWARE

QTY	DESCRIPTION	PART NO.
2	M8 x 16mm BHSCS	13MFA3613
2	M8 x 1.25 ECONOMY T-NUT	15MFA3920

See pages 258-265 for additional fasteners & T-nuts

40JP4502

3 HOLE JOINING STRIP



Part weight: .155 lbs

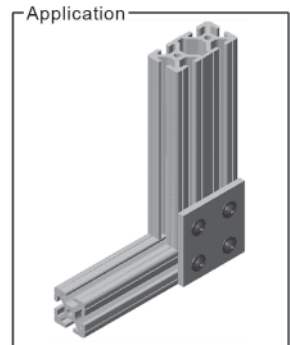
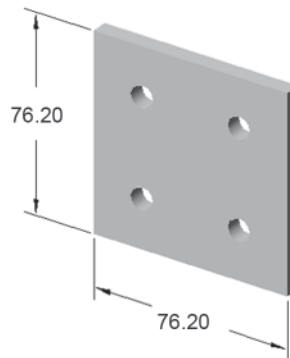
RECOMMENDED HARDWARE

QTY	DESCRIPTION	PART NO.
3	M8 x 16mm BHSCS	13MFA3613
3	M8 x 1.25 ECONOMY T-NUT	15MFA3920

See pages 258-265 for additional fasteners & T-nuts

40JP4504

4 HOLE JOINING PLATE



Part weight: .210 lbs

RECOMMENDED HARDWARE

QTY	DESCRIPTION	PART NO.
4	M8 x 16mm BHSCS	13MFA3613
4	M8 x 1.25 ECONOMY T-NUT	15MFA3920

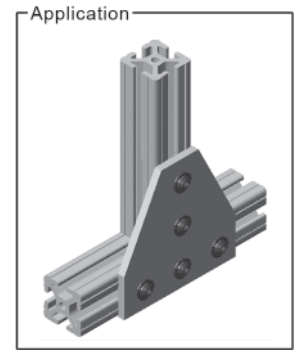
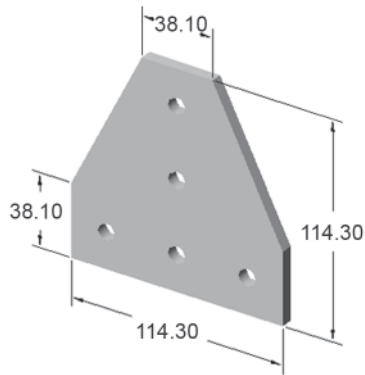
See pages 258-265 for additional fasteners & T-nuts



Joining Plates

40JP4506

5 HOLE TEE JOINING PLATE



Part weight: .370 lbs

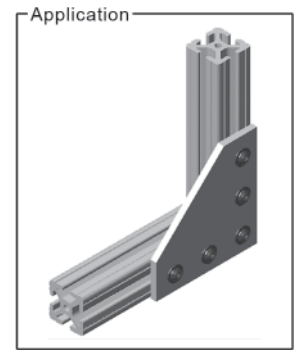
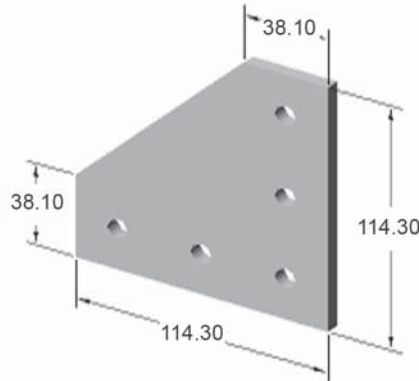
RECOMMENDED HARDWARE

QTY	DESCRIPTION	PART NO.
5	M8 x 16mm BHSCS	13MFA3613
5	M8 x 1.25 ECONOMY T-NUT	15MFA3920

See pages 258-265 for additional fasteners & T-nuts

40JP4507

5 HOLE 90° JOINING PLATE



Part weight: .375 lbs

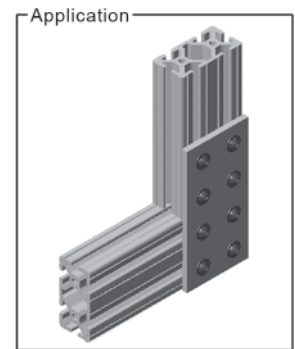
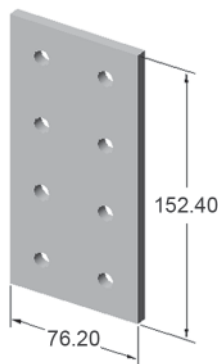
RECOMMENDED HARDWARE

QTY	DESCRIPTION	PART NO.
5	M8 x 16mm BHSCS	13MFA3613
5	M8 x 1.25 ECONOMY T-NUT	15MFA3920

See pages 258-265 for additional fasteners & T-nuts

40JP4509

8 HOLE JOINING PLATE



Part weight: .415 lbs

RECOMMENDED HARDWARE

QTY	DESCRIPTION	PART NO.
8	M8 x 16mm BHSCS	13MFA3613
8	M8 x 1.25 ECONOMY T-NUT	15MFA3920

See pages 258-265 for additional fasteners & T-nuts