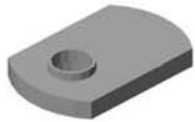


# 15 SERIES T-NUTS



### ECONOMY T-NUT

- Low cost, high strength



### DROP-IN T-NUT W/ SET SCREW

- High strength
- Easy to add or reposition
- Secures for fast assembly
- Extra thread engagement
- Use a 3/32" hex wrench to tighten the set screw
- Not recommended for use with 15EX1515UL



### DOUBLE ECONOMY T-NUT

- Low cost, high strength
- Fast assembly for plates
- 1.5" center lines
- Drop-in feature



### DROP-IN T-NUT

- High strength
- Flexible handle
- Easy to add
- Extra thread engagement
- Rubber nub can be used as a friction point



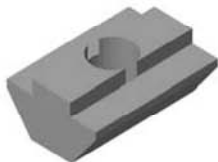
### TRIPLE ECONOMY T-NUT

- Low cost, high strength
- Fast assembly for plates
- 1.5" center lines
- Drop-in feature



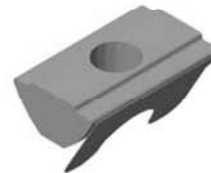
### DROP-IN T-NUT W/ ALIGNMENT BALL

- High strength
- Easy to add or reposition
- Extra thread engagement
- Spring loaded ball
- Secures for fast assembly
- Not recommended for use with 15EX1515UL



### HI-TORQUE T-NUT

- Low cost, high strength
- Extra thread engagement



### DROP-IN T-NUT W/ SPRING LEAF

- For use with 15EX1515UL
- High strength
- Easy to add or reposition
- Extra thread engagement
- Spring leaf - holds in place
- Secures for fast assembly



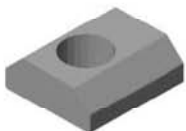
### DOUBLE HI-TORQUE T-NUT

- Low cost, high strength
- Extra thread engagement



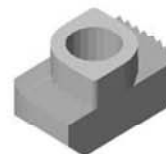
### DROP-IN T-NUT BLANK PROFILE

- High strength
- Unlimited opportunities
- Machine it your way



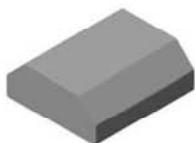
### STANDARD T-NUT

- Low cost, high strength
- Extra thread engagement



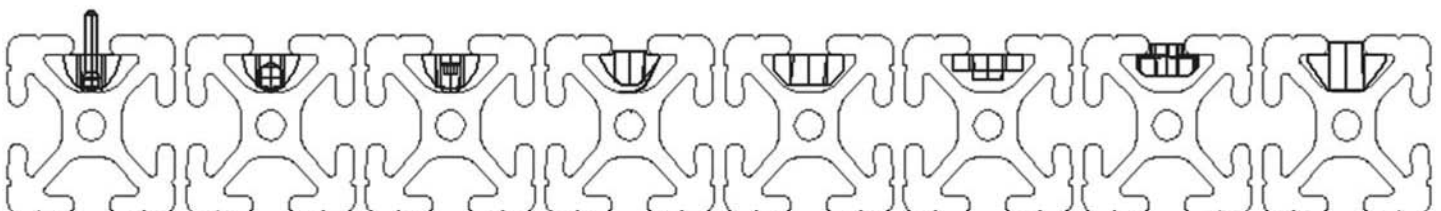
### Z-NUT

- High strength
- Easy to add or reposition
- Secures for fast assembly
- Rotates 90 and locks in place



### STANDARD T-NUT BLANK PROFILE

- High strength
- Unlimited opportunities
- Machine it your way



Rubber Handle

Alignment Ball

Set Screw

Spring Leaf

Standard

Economy

Z-Nut

Hi-Torque